

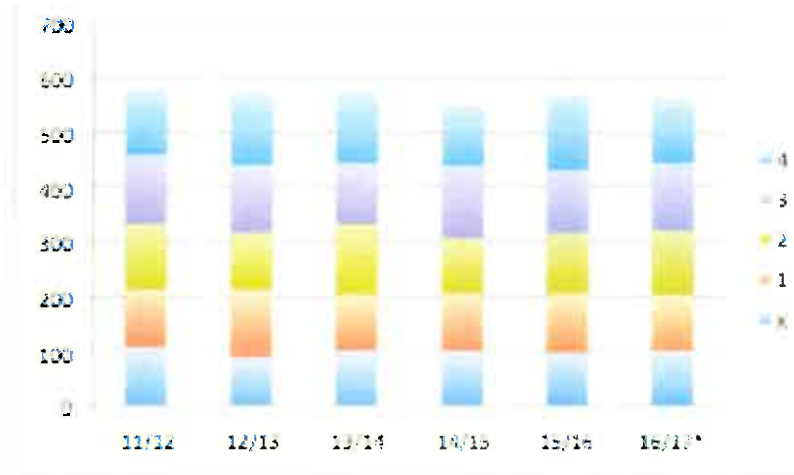
Cape Schools Enrollment

From 2011/12 to 2016/17 (projected)

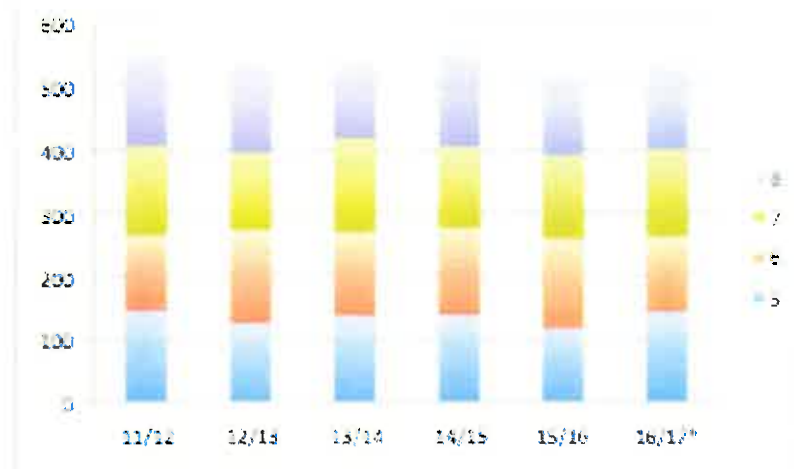
Overall trends

- Enrollment is down 57 students over the last 5 years or 11.4 students/year.
- Sizeable variations were seen over the last 2 years in projected enrollment (historical and Planning Decisions data considered) vs. actual.
- Elementary enrollment has been the most volatile.
- Next year's projections are based on the variations noted over the last 2 years.

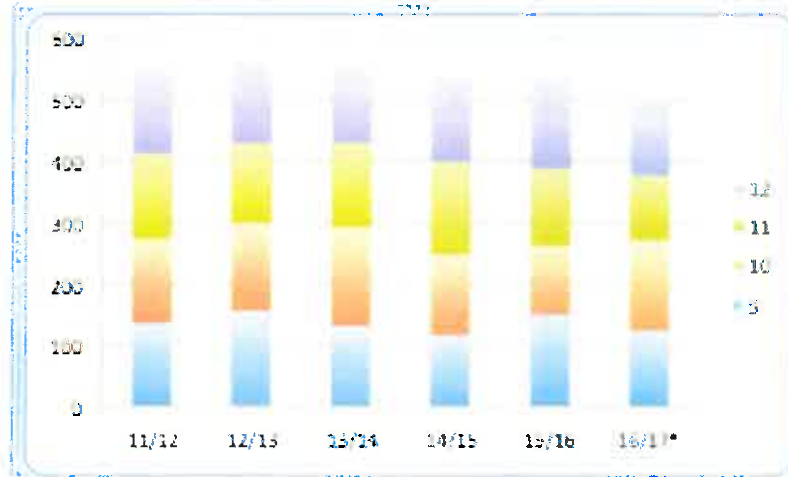
Elementary enrollment



Middle school enrollment



High school enrollment



District enrollment



Why does this matter?

- Class size is the single largest factor driving the staffing budget in K-8.
- Revised [class size policy](#) provides ranges that serve as a guideline for determining class sizes at K-8 and retains course load guidelines for high school teachers.
- District-wide decreases in enrollment do not always translate to fewer teachers as those reductions are most often spread across K-12.

What do we do with this information?

- Seek to utilize most current experience data and enrollment information in future projections.
- Watch enrollment variations and grade by grade numbers closely.
- Consider carefully whether or not to replace positions vacated through attrition.
- Monitor program impacts and course load thresholds at the high school level.

CAPE ELIZABETH SCHOOL DEPARTMENT						
ENROLLMENT HISTORY & PROJECTION						
	11/12	12/13	13/14	14/15	15/16	16/17*
K	107	88	101	100	97	100
1	105	123	102	105	107	102
2	120	105	128	101	112	118
3	127	124	113	133	115	124
4	120	133	134	112	139	118
total	579	573	578	551	570	562
5	145	125	137	138	116	143
6	119	147	132	137	142	119
7	142	123	149	130	133	139
8	150	141	124	151	127	133
total	556	536	542	556	518	534
9	136	155	131	116	150	123
10	136	143	160	131	111	148
11	139	130	138	152	126	105
12	137	137	126	141	151	128
total	548	565	555	540	538	504
TOTAL	1683	1674	1675	1647	1626	1600